



2017 Structural Profile

A FIFTH DIMENSION TO ENGINEERING



Element Consulting Engineers

Company Overview

Element Consulting Engineers, (Registration No 2002/444) is a firm of multi-disciplinary Consulting Engineers. The company is young and dynamic and with an average age of 33 years old for all its employees it is evident that since 2008 mostly young engineers were appointed. They were being mentored and trained to become Professional Engineers and most were now ready to become the new Shareholders and young Management team for Element. Our head office is in Windhoek, with an office in Ongwediva and the recently opened office in Swakopmund that will serve the Coastal/Erongo region.

Element Consulting Engineers is active in the fields of civil, water and sanitation, township and municipal engineering, roads, structural, mining infrastructure, electrical and mechanical engineering, as well as project management and property development.

- 40% PDP Management
- Staff Complement of 35 of which 30 are Namibian
- Engineering Bursary Scheme since 2008
- Joint-Ventures and Technical Exchange with Consulting Firms owned by Previously Disadvantaged Namibians.
- Corporate Social Responsibility projects

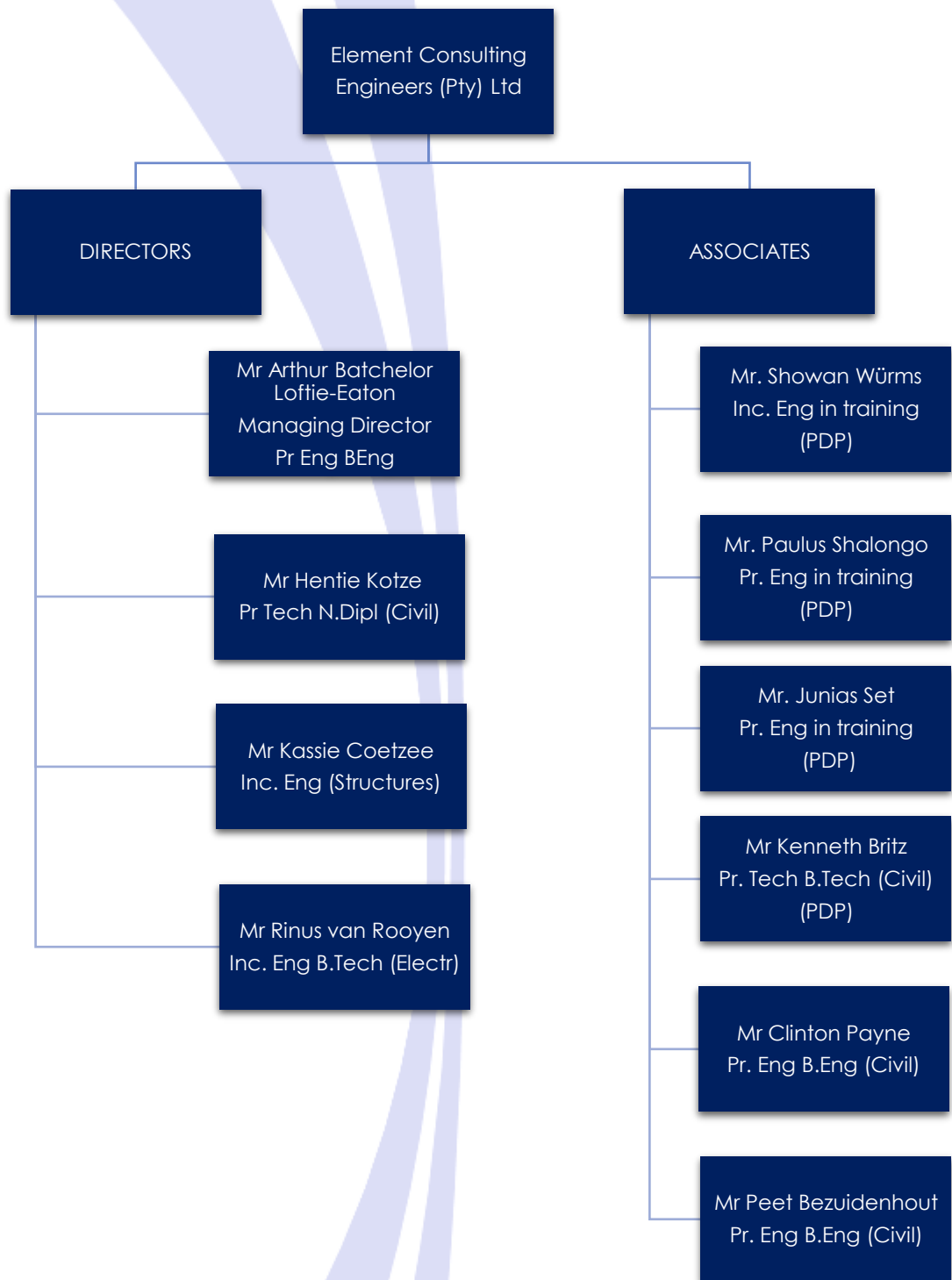
The Company strives to achieve excellence in all the services it provides and to provide meticulous attention to detail whether projects are large or small. It is an independent company with no obligations to or ties with any commercial concern which could influence the professional judgement, recommendations or decisions given by the Company.

Associations

Our personnel are members of a variety of professional and voluntary associations, including the following:

- Engineering Council of Namibia (ECN)
- Engineering Council of South Africa (ECSA)
- South African Institution of Civil Engineers (SAICE)
- Association of Consulting Engineers Namibia (ACEN)
- Engineering Professions Association Namibia (EPA)

Management Structure

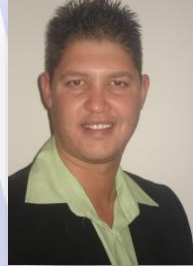


The company is 100% Namibian owned.

Our Structural Engineering Team



Kassie Coetzee
Inc. Eng. (Structures)
Director: Structures



Kenneth Britz
Eng. Tech (Structures)
Associate: Structures
Pr. Tech



Showan Würms
B Tech (Civil)
Associate: Structures



Adriaan Badenhorst
B. Eng. M.Sc. Eng. (Structures)
Pr. Eng



Oswald Amolo
B. Eng. (Civil)
Pr. Eng



Martha Victor
B.Tech. (Civil)



Ryno Barnard
B.Eng. M. Eng. (Civil)



Mathew Mouton
B.Eng. (Civil)

Structural Engineering Team continued

Element Consulting Engineers has a very capable Structural Engineering division. We employ both experienced and highly qualified professional engineers and technicians who are well versed to plan, analyse, design and detail any type of structure and to manage any type of property development. We specialize in load bearing brickwork, pre-stressed concrete, reinforced concrete multi-storey, structural steel multi-storey, Lattice / Rib and block slab structures, composite concrete and steel, bond deck, timber, mass concrete retaining structures, mass concrete arch dams and gabion topple over structures.

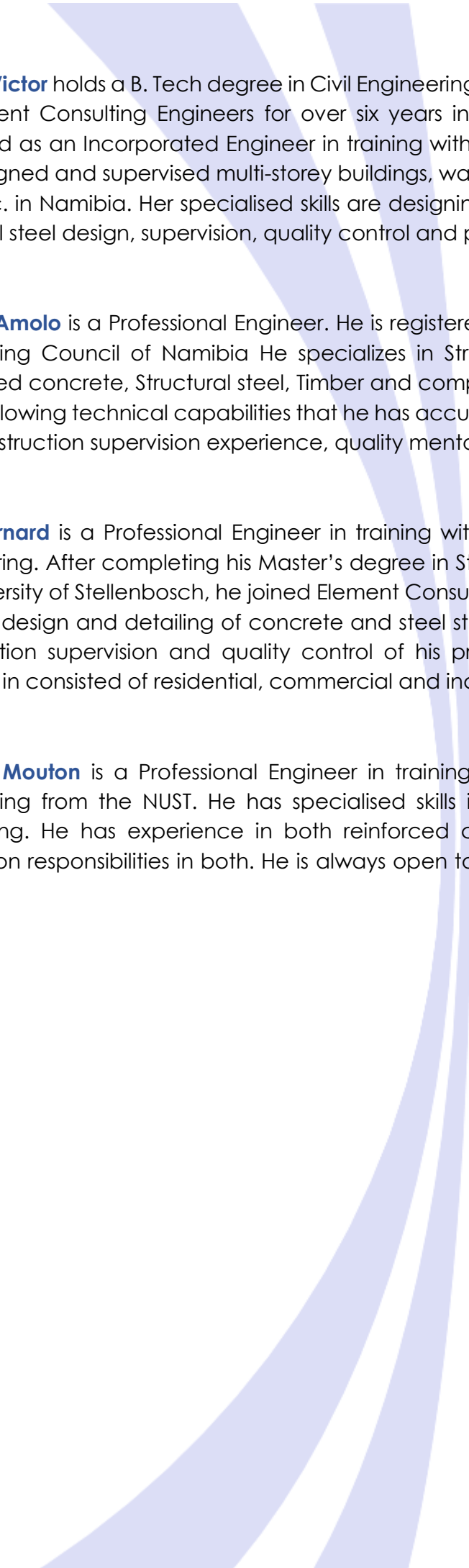
Our structural design methodology is based on SABS / SANS Norms and standards. We make use of software packages such as Prokon, whereas the detailing and drafting part of a project is finished with packages such as AutoCad and Prokon Padds. Element Consulting Engineers' Structural Department also does structural integrity investigations and reporting on existing structures to determine damage, functionality of purpose and economic life span of the structure.

Kassie Coetzee is a qualified Incorporated Engineer registered at both the Namibian and South African Engineering Councils. He specializes in multi-storey structural steel and reinforced concrete design. He has extensive experience in the Namibian and South African Construction environment. He was appointed as the Director of the Structural Department in September 2012.

Adriaan Badenhorst is a Professional Engineer with a Master's of Science in Engineering (M.Sc. Eng) degree in Structural engineering from the University of Stellenbosch. He is registered as a Professional Engineer with the Engineering Council of Namibia. He has 5 years design and supervision experience in the Namibian built environment. He specializes in the design of multi-storey reinforced concrete structures, structural steel design, bridge analyses, finite element analyses, site supervision, project management and quality control. He has been involved in projects of residential, industrial, institutional and commercial nature.

Showan Würms is a registered Incorporated Engineer in training with over seven years of experience in the civil engineering field. His expertise and skills include the design of reinforced concrete and steel structures, drafting of construction plans (CAD), construction supervision and project management. He has been involved in projects of residential, commercial and industrial nature both in the public and private sector. He was appointed as Associate for Element Consulting Engineers in Nov 2016.

Kenneth Britz is a Professional Technician registered at the Namibian Engineering Council. He gained his B. Tech degree in Civil Engineering in 2015 through further part-time studies. He has over 10 years' experience in the field of Civil and Structural engineering and specializes in multi-storey structural steel and reinforced concrete building design. He was appointed as Associate for Element Consulting Engineers in Nov 2016.



Martha Victor holds a B. Tech degree in Civil Engineering from the NUST. She has been working for Element Consulting Engineers for over six years in the field of civil engineering. She is registered as an Incorporated Engineer in training with the Engineering Council of Namibia. She designed and supervised multi-storey buildings, warehouses, hospitals, schools, shopping malls etc. in Namibia. Her specialised skills are designing and detailing reinforced concrete, structural steel design, supervision, quality control and project management.

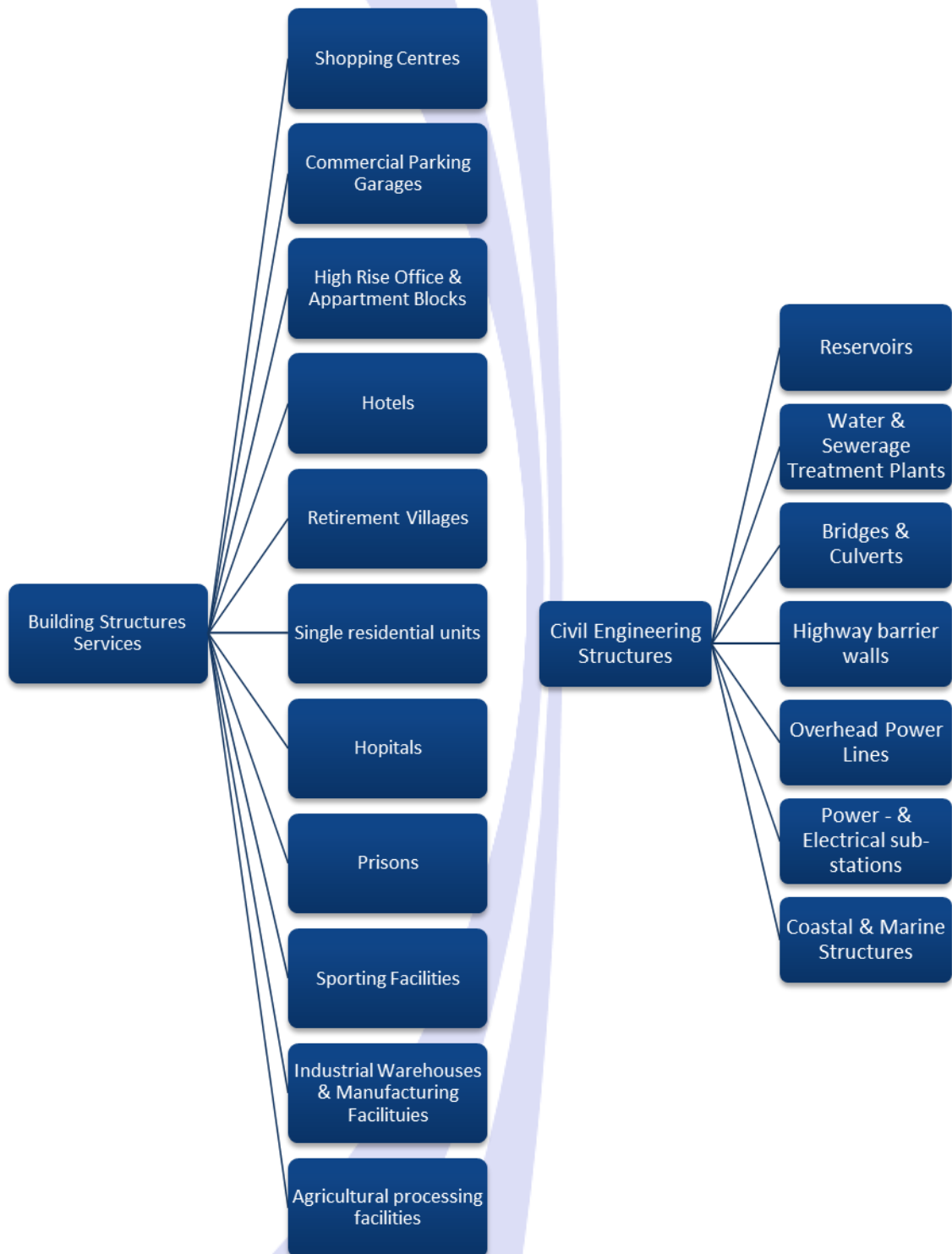
Oswald Amolo is a Professional Engineer. He is registered as a Professional Engineer with the Engineering Council of Namibia. He specializes in Structural Engineering with expertise in Reinforced concrete, Structural steel, Timber and composite structures. His expertise extends to the following technical capabilities that he has accumulated over years – structural design and construction supervision experience, quality mentorship and training.

Ryno Barnard is a Professional Engineer in training with two years' experience in structural engineering. After completing his Master's degree in Structural engineering (Cum Laude) at the University of Stellenbosch, he joined Element Consulting engineers in 2014. His experience includes design and detailing of concrete and steel structures. He is also responsible for the construction supervision and quality control of his projects. The projects where he was involved in consisted of residential, commercial and industrial buildings.

Mathew Mouton is a Professional Engineer in training. He holds a B. Eng. degree in Civil Engineering from the NUST. He has specialised skills in multi-storey structural designs and draughting. He has experience in both reinforced concrete and steel designs with site supervision responsibilities in both. He is always open to new challenges and gives attention to detail.

Scope of Services Offered

The Structural Department implement projects from the Tender phase to the Final Approval phase and closely interacts with all role players to deliver projects on time and within budget and quality. Structural projects resort either under Civil Engineering or Building Structures projects:



Related Project Experience



Promenade Gardens, Windhoek



Topaz A Morningside



The Jade, Morningside



Topaz B, Morningside



Residence Stephano, Northcliff



The Waldorf, Midrand



Stone Square - Windhoek



Thaba Nkulu, Senekal



Residence Claassen,
Avasblick Windhoek



Residence Lewis,
Okahandja



New Entertainment Area Daan
Viljoen Resort Namibia



DOAS Offices - Mariental



2 Centre Road - Morningside



Weaver's Nest - Kleine Kuppe -
Windhoek



RFA Building - Windhoek

Extracts of Recent Projects

Commercial Projects:

- Design-Supply Showroom for Automark – Mariental
- Design-Supply Filling Station Canopy for Total – Mariental
- Sun Karros Daan Viljoen - Windhoek
- RFA building – Windhoek
- Bargain Building Supplies – Katima Mulilo
- Bargain Building Supplies – Gobabis
- Bargain Building Supplies – Otjiwarongo



Industrial Projects:

- Industrial development for Jahenmar – Southern Industrial – Windhoek
- Industrial development for Bideg – Southern Industrial – Windhoek
- Industrial development for Property Marketing – Khomasdal – Windhoek
- Geotechnical investigations for Bokomo – Brakwater
- Industrial development for ABB – Lafrenz – Windhoek



Institutional Projects:

- Classrooms for Windhoek Afrikaanse Privaatskool – Eros – Windhoek
- Renovations and upgrades of Treintjieskool – Eros – Windhoek
- Classrooms for St. Pauls College – Klein Windhoek – Windhoek
- Administration Building for University of Namibia – Windhoek
- Renovations and upgrades of Nehale Senior Secondary School – Nehale
- Otjomuise primary School – Otjomuise – Windhoek
- Pavilion at Wanderers for Windhoek Afrikaanse Privaatskool – Pioneerspark – Windhoek
- Triumphant College – Khomasdal – Windhoek
- Waldorf School – Avis – Windhoek

Public Service Projects:

- Regional Management Offices for Directorate of Auxiliary Services – Mariental
- Regional Management Offices for Ministry of Health – Oshakati
- Otjinene Magistrate Court - Otjinene

Medical/Health Projects:

- Maternity ward extension of Opuwo Hospital – Opuwo
- Fransfontein Clinic – Fransfontein
- Anichab Clinic – Anichab
- Queen Sophia Clinic – Outjo



- Katutura Medical Centre – Katutura – Windhoek
- Omaramba Private Medical Clinic – Eros – Windhoek
- Khomas Medical Centre – Windhoek West - Windhoek

Residential Projects:

- 13 Unit Townhouse Development for Bideg – Kleine Kuppe – Windhoek
- Havana Flats – 57 Unit Flat Development –Katutura – Windhoek
- Rocky Hills – 68 Unit Flat Development –Rocky Crest – Windhoek
- Rocky Valley – 46 Unit Flat and Townhouse Development –Rocky Crest – Windhoek
- Rocky Mountain – Rocky Crest – Windhoek
- Erf 308 – 140 Unit Flat Development – Elisenheim – Windhoek
- Erf 307 – 94 Unit Flat Development – Elisenheim – Windhoek
- Beach Break Development, upmarket houses and apartments – Swakopmund
- New Apartment Blocks – Noordoewer
- Mass Residential Development for Tumeko – Ongwediva
- Eagle Views – Apartment Development – Eros – Windhoek
- Peace Garden – 26 Unit Townhouse Development – Ludwigsdorf - Windhoek

Mixed Use Developments:

- City Plaza Mixed Use Development – Offices and Apartments – Klein Windhoek –



Windhoek

- Stone Square Mixed Use Development – Offices and Apartments – Windhoek
- Heinitzburg Heights Mixed Use Development – Offices and Townhouses – Luxury Hill – Windhoek
- Touch of Style Mixed Use Development – Offices and Apartments – Windhoek
- Bergdoring Mixed Use Development – Offices and Apartments – Windhoek



Contact Us

www.element.com.na

Windhoek

6 Otto Nitzsche Street Klein Windho
Namib
P.O. Box 11598 Klein Windhoek Namib
Tel: +26 4 61 309 416 Fax: +26 4 61 309 4

Ongwediva

Erf 7053, Kalomo Kautondokwa Stre
Ongwediva Namib
P.O. Box 90008 Ongwediva Namibia
Tel: +26 4 65 230344 Fax: +26 4 65 230 2

Swakopmund

17 Albatros Street, Vineta, Swakopmun
PO Box 4668, Vineta, Swakopmur
Namibia, 90
C: +264 81 856 110

