

# 2017 Civil Engineering Profile



A FIFTH DIMENSION TO ENGINEERING



# Element Consulting Engineers

## Company Overview

Element Consulting Engineers, (Registration No 2002/444) is a firm of multi-disciplinary Consulting Engineers. The company is young and dynamic and with an average age of 33 years old for all its employees it is evident that since 2008 mostly young engineers were appointed. They were being mentored and trained to become Professional Engineers and most were now ready to become the new Shareholders and young Management team for Element. Our head office is in Windhoek, with an office in Ongwediva and the recently opened office in Swakopmund that will serve the Coastal/Erongo region.

Element Consulting Engineers is active in the fields of civil, water and sanitation, township and municipal engineering, roads, structural, electrical and mechanical engineering, as well as project management and property development.

- 40% PDP Management
- Staff Complement of 35 of which 30 are Namibian
- Engineering Bursary Scheme since 2008
- Joint-Ventures and Technical Exchange with Consulting Firms owned by Previously Disadvantaged Namibians.
- Corporate Social Responsibility projects

The Company strives to achieve excellence in all the services it provides and to provide meticulous attention to detail whether projects are large or small. It is an independent company with no obligations to or ties with any commercial concern which could influence the professional judgement, recommendations or decisions given by the Company.

## Associations

Our personnel are members of a variety of professional and voluntary associations, including the following:

- Engineering Council of Namibia (ECN)
- Engineering Council of South Africa (ECSA)
- South African Institution of Civil Engineers (SAICE)
- Association of Consulting Engineers Namibia (ACEN)
- Engineering Professions Association Namibia (EPA)

# Management Structure



The company is 100% Namibian owned, with PDP management at 40%.

# Our Civil Engineering Team



**Batch Loffie-Eaton**  
Pr. Eng. (Civil)  
Director: Civil Engineering  
PE95005



**James Turner**  
Pr. Eng. (Civil)  
Senior Water Specialist  
PE93010



**Louwrens Muller**  
B Tech (Civil)  
IE 2014-22



**Johan Potgieter**  
B Tech (Civil)  
IE2014-19

## Water & Sanitation Engineering continued

The Civil Department is headed by Mr Batch Loffie-Eaton. His fields of expertise include design and implementation water supply networks, sewer networks, civil infrastructure developments and master planning for civils services. He was the Project Engineer overseeing various projects including the design and supervision of all civil works at the NPI poultry processing plant at Okapuka for the Namibian Poultry Industries; Katima Mulilo / Ngoma and Ondangwa / Omuntele water supply schemes and various municipal infrastructure projects.


Mr James Turner is a Water Specialist Engineer who renders expert professional services like master planning, economic feasibility studies and hydraulic analysis especially in the fields of agriculture, bulk water supply, irrigation and desalination. He also has vast experience in sewer treatment works planning and design.

The Department has successfully undertaken numerous projects in Namibia as well as South Africa, Angola, Ghana, Togo and Malawi. These projects were completed for various clients, including private, municipal, governmental organizations and public corporates.

**Batch Loffie-Eaton** is a Professional Engineer with a B. Eng. degree from the University of Stellenbosch. He is registered as a Professional Engineer with the Engineering Council of Namibia. He has 26 years planning, design, and supervision and project management experience in Namibia. He has extensive experience in implementation of water supply networks, sewer networks municipal infrastructure, civil infrastructure developments and master planning for civils services. He was involved in the planning, design, implementation and project management stages of an array of water, sanitation and civil infrastructure projects. He also has vast experience in the Road Sector Management and Traffic Engineering fields.

**James Turner** is a Professional Engineer with a B. Eng degree from the University of Stellenbosch. He is registered as a Professional Engineer with the Engineering Council of Namibia and South Africa. He has 27 years planning, design and supervision experience in various countries including Namibia, South Africa, Angola, Ghana, Togo and Malawi. He specializes in master planning, economic feasibility studies and hydraulic analysis especially in the fields of agriculture, bulk water supply, irrigation and desalination. He has been involved in projects of residential, industrial, institutional and commercial nature.

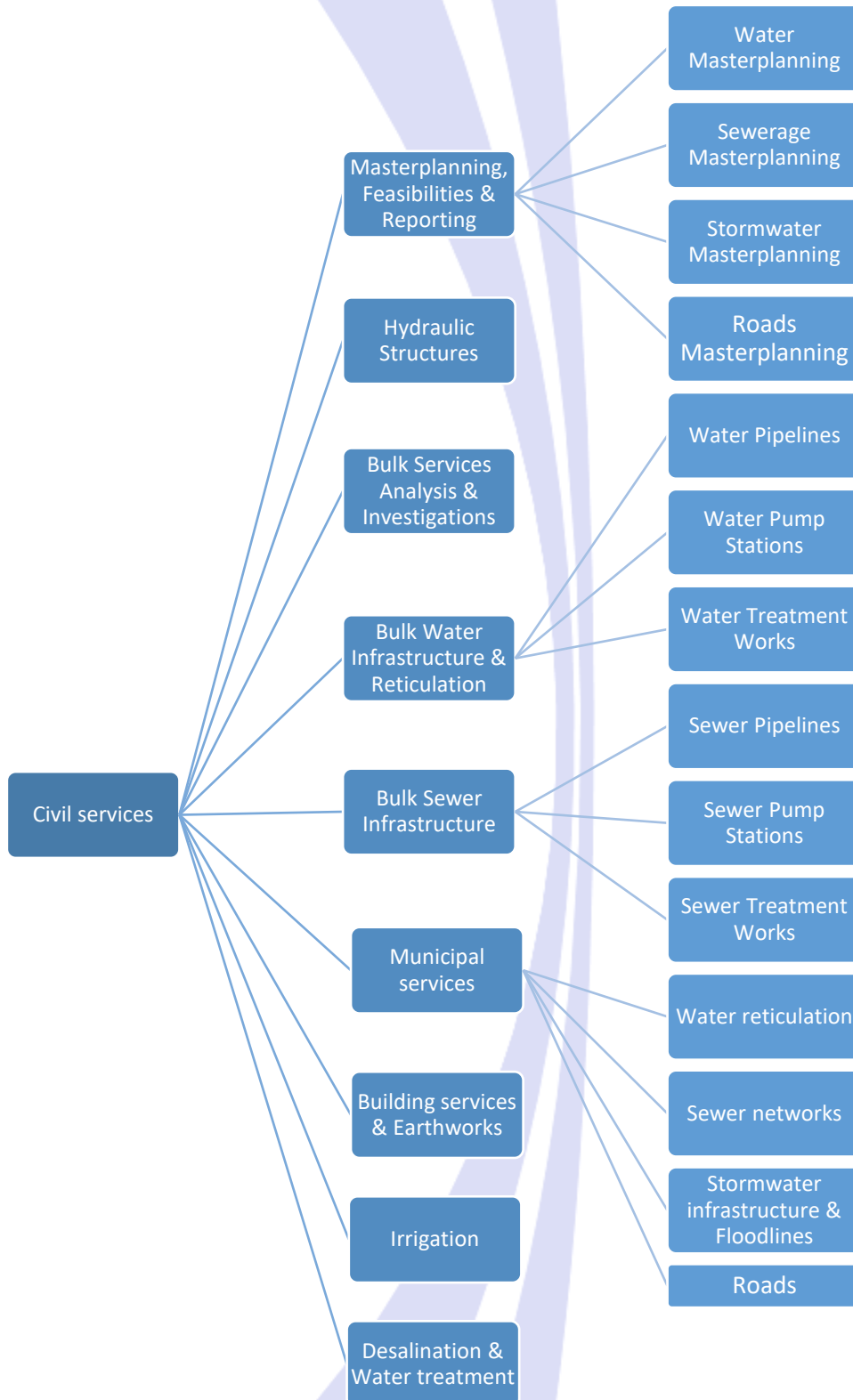
**Louwrens Muller** is registered with the Engineering Council of Namibia as an Incorporated Engineer and as an Engineering Technologist with the Engineering Council of South Africa. He has more than nine years of experience in the civil engineering field. His expertise and skills include the design of bulk and internal services pertaining to sewer reticulation, water supply, stormwater management, status quo analysis and earthworks design. He has extensive knowledge of various design packages and is also proficient in the use of Geographic Information Systems (GIS) software. His main responsibilities include the design of infrastructure, analysis/evaluation of existing infrastructure, report writing, compilation of tender documents and production of drawings, project management, construction supervision and mentorship to junior staff members. He has been involved in projects of residential, commercial and industrial nature both in the public and private sector.



**Johan Potgieter** is a Professional Technician with a B Tech in Civil Engineering from the Freestate University of Technology and is registered at the Namibian Engineering Council. From 2002-2011 he was employed at several Consulting Firms in the United Kingdom during which he obtained a Master's degree in structural engineering through part-time studies. During his time at Element he was the Resident Engineer on various roads and civil infrastructure projects. He also has vast experience in design of rural water supply schemes as well as general municipal services (roads, water, sewer and stormwater). He was also the design engineer for and acted as project manager on the Omeya Residential Development Phase 2. He specializes in stormwater structures/lines and sewer line designs. He has been involved with major residential, industrial, institutional and commercial developments over the last 17 years.

# Scope of Services Offered

The Civil Services Department implement projects from the initiation and planning phase to the final handover and closely interacts with all role players to deliver projects on time and within budget and quality.



# Related Project Experience

## Master planning, Feasibilities & Reporting:

- Ongos, Windhoek - Township Development
- Goodhope, Otjiwarongo - Township Development
- Farm Stampried, Stampriet – Township Development
- Swakopmund Water Network Analysis
- Great Kei Water Supply, Hydraulic Modeling & Master Planning
- Medium- to Longterm Roads Masterplan, Namibia
- Namibia Agro-Processing Strategy
- Katima Mulilo – Ngoma Water Supply Scheme
- Omuntele Water Supply Scheme
- King Kauluma Water Supply Scheme
- Bulk Water Supply – Namibia Poultry Industries
- Bulk Water & Sanitation Master Plans
  - Cape Wineland District Municipalities
  - Cederberg Municipality
- Cape Fria, Namibia – Harbour Feasibility
- Namwater Central Area Water Augmentation Masterplan
- Bulk Sewerage Disposal Masterplan, St Helena Bay
- Amatola Bulk Water Supply Master Planning
- Bulk Sewer Masterplan, Windhoek

## Hydraulic Structures:

- Ovitoto Bridges
- Katima Mulilo, 6MI Reservoir
- Omuntele Water Supply Scheme, 2MI Reservoir
- King Kauluma Water Supply Scheme, 2MI Reservoir
- Laingville Waste Water Treatment Works
- Gobabis Sewer Pumpstation
- Ashton WasteWater Treatment Works
- Namibia Poultry Industries, Abattoir Effluent Settling tanks & Pumpstations
- Montagu Sewer Pumpstation

## Bulk Services Analysis & Investigations:

- Swakopmund Water Network Analysis
- City of Windhoek, Otjimuse Pumpstation
- Luanda Bulk Water Supply Investigation
- Namwater Scheme, Aroab
- Namwater Scheme, Otjiwarongo
- Bulk Water & Sanitation Investigation, Cederberg Municipality
- Bulk Services Investigation, Riversdal
- Bulk services Investigation and Masterplanning, Gordon's Bay
- Bulk Water Masterplan, Urban Areas, Windhoek



### **Bulk Water Infrastructure & Reticulation:**

- Katima Mulilo / Ngoma Water Supply Scheme
- Ondangwa / Omuntele Water Supply Scheme
- Oshivelo . King Kauluma Water Supply Scheme
- Namibia Airports Company – Ondangwa Airport Bulk Water Supply
- Namibia Poultry Industries – Bulk Water Supply
- Otjivero – Gobabis Pipeline : Hydraulic investigation

### **Bulk Sewer Infrastructure:**

- Upgrading of Walvis Bay Water Treatment Works
- Gobabis Sewer Pumpstation & Rising Main
- Stilbaai Sewer Pumpstation & Rising Mains
- Upgrading of Ashton Sewer Treatment Works
- Langebaan Sewerage Treatment Works

### **Municipal Services:**

- Punyu Village, Oshakati
- Faith City Development, Rocky Crest
- Omeya Residential Development
- Gobabis Municipality, Civil Services & Roads
- Ongos Township Development
- Stormwater systems & Streets, City of Windhoek
- Goodhope, Otjiwarongo – Township Development
- Farm Stampried, Stampriet – Township Development
- Erf 1448, Khomsdal – Township Development
- Latenda View, Kleine Kuppe – Residential Development

### **Building Services & Earthworks:**

- RFA Building, Windhoek
- Katutura Health Centre, Windhoek
- UNAM Administration Building, Winhoek
- Opuwo Hospital Extensions
- Queen Sophia Clinic
- Otjimuse School, Windhoek
- Baklaghadi Traditional Offices, Omaheke Region
- Omeya Residential Development
- Erf 1436, Rocky Crest Residential Development
- Feedmill, Otjihavera
- Rocky Valley, Residential Development
- Rocky Hills, Residential Development
- Erf 8805 Windhoek, Warehouse Development
- Namibia Poultry Industries, Otjihavera
- Affies Park Sportsfields & Facilities
- Various stormwater projects & Flood studies
- Otjinene Magistrates Court

- Bagani Military Base
- Ovamboland Post Offices
- Karos Sossusvlei Hotel Sesriem

#### **Irrigation:**

- Springwater Development, Stampriet
- Ovamboland Irrigation
- Okavango Irrigation Feasibility Study
- Angola Irrigation Investigation, Bengo River, Luanda
- Orange River Irrigation Scheme Feasibility

#### **Desalination & Water treatment**

- Upgrade of Katima Mulilo Water Treatment Plant
- Oshakati Water Treatment Plant & Potable Water pumpstation
- Lamberts Bay Desalination Plant
- Swartland Water Treatment Works
- Upgrade of Walvis Bay Waste Water Treatment Plant
- Upgrade of Langebaan Waste Water Treatment Plant

# Contact Us

[www.element.com.na](http://www.element.com.na)

## Windhoek

6 Otto Nitzsche Street Klein Windhoek  
Namibia

P.O. Box 11598 Klein Windhoek Namibia  
Tel: +26 4 61 309 416 Fax: +26 4 61 309 4

## Ongwediva

Erf 7053, Kalomo Kautondokwa Street  
Ongwediva Namibia

P.O. Box 90008 Ongwediva Namibia  
Tel: +26 4 65 230344 Fax: +26 4 65 230 2

## Swakopmund

17 Albatros Street, Vineta, Swakopmund  
PO Box 4668, Vineta, Swakopmund  
Namibia, 90

C: +264 81 856 110

